



CASE FOR SUPPORT

Since 2004, Blood:Water has raised over 45 million dollars to support local organizations in East and Southern Africa.



THE PROBLEM

Only 14% of funding from international donors goes to local organizations in Africa, so an astounding 86% of funding never gets into the hands of those closest to the issues being addressed*. Many local leaders and community-based organizations are implementing solutions that drive lasting change, but they are under-resourced and under-funded.

Despite decades of work and trillions of dollars spent, the linked water and HIV/AIDS crises in Africa persist. Every 2 minutes, a child dies from lack of access to clean water. In Africa, 60% of all new HIV infections occur in women, infants, or young children**.

THE BLOOD:WATER MODEL IS UNIQUELY SUITED TO SOLVE THE PROBLEM



OUR MISSION

Blood:Water is an international nonprofit that partners with African community-driven organizations to end water and HIV/AIDS health disparities through organizational strengthening and financial support.

OUR VISION

To share in the joy of ending the water & HIV/AIDS crises - *with* our partners and *in* this lifetime.



“
Something unique about Blood:Water is how keen Blood:Water is on ensuring that their partner organizations rise to another level leaving the organizations sustainable even after the 8 year partnership has ended.”

Geoffrey Kinaalwa

Executive Director of Partners for Community Transformation (PaCT), Uganda

OUR APPROACH

Healthy organizations equal healthy communities. We commit to **eight years** of funding and utilize an assessment tool, called the Institutional Development Framework (IDF), used by civil society organizations globally for over 20 years to guide our organizational strengthening activities. Our model has proven to be successful in supporting the growth of the local team and leadership, increasing the organization's financial health, and ensuring these activities increase overall program quality through collaborative monitoring, evaluation and learning. This is a recipe for healthy and sustaining organizations poised to serve their communities for years to come.



OUR MODEL

COMMUNITY
DRIVEN
ORGANIZATIONS



EIGHT YEAR
FUNDING



ORGANIZATIONAL
STRENGTHENING



**EVERY EIGHT YEARS,
BLOOD:WATER STRENGTHENS
19 PARTNER ORGANIZATIONS,
DIRECTLY IMPACTING
686,000 PEOPLE.**

MEASURING SUCCESS

We bolster partners that have viable programs, adequate resources, and credible systems consistently applied throughout their work. What does that look like?

- + Their **vision and mission** are clear and have buy-in across stakeholders
- + Their **strategic plan drives** planning, resourcing and decision making
- + Their **recruiting, hiring, performance management, and compensation practices** improve retention and team culture
- + They bring **expertise in their programs** and utilize quantitative and qualitative data in decision-making
- + They demonstrate **best practices in accounting and financial management** along with **diversity in funding**
- + They **create and leverage existing networks of collaboration** where they serve

MONITORING, EVALUATION & LEARNING

We measure outcomes in 4 key areas across our eight-year partnership:

- + Partners strengthened to the sustaining stage of development
- + Increased program quality
- + Financial viability
- + Organizational autonomy

By measuring the % increase/improvement with each area as well as a combined growth score we can demonstrate the organization's expanded capacity and reach based on our partnership with them.

“You can't learn about the communities we serve through books. These issues need to be seen and understood at the community level, so we are the best to address these issues.”

Ephy Imbali

Executive Director, Community Asset Building & Development Action (CABDA), Kenya

OUR RESULTS



43%
**INCREASE IN PARTNER
PROGRAM QUALITY**



20%
**PARTNER GROWTH IN
FINANCIAL VIABILITY**



20%
**GROWTH TOWARD THE
SUSTAINING STAGE OF ORG
DEVELOPMENT**



8%
**GROWTH IN ORG
AUTONOMY**

BY 2027

25%
PARTNER PORTFOLIO
INCREASE

IMPACTING
**2 MILLION
PEOPLE**

RAISING \$10.5 MILLION

THE OPPORTUNITY

We are seeking new philanthropic partners to join us as we **scale our impact** by:



Growing the number of partners in our portfolio that will have access to our unique model. We have proven that our model works, and we look forward to partnering with more like-minded community organizations in East and Southern Africa.



Exponentially increasing the positive impact on communities across East and Southern Africa, getting us closer to the end of the water and HIV/AIDS crises in the region.



Continuing to grow The Leader Collective to extend our reach beyond just the partners in our portfolio.

“Some funders are driving their own mission and vision when providing funding for projects because of the restrictions they have. Partnership with BloodWater is different because Blood:Water allows us to drive our mission and set our agenda.”

Jimmy Katuma
Executive Director, Community Partnership for Relief & Development (COPRED), Malawi



LEADER COLLECTIVE
AT BLOOD:WATER

The Leader Collective is an online community of practice that exists to convene, cultivate, and amplify African leaders driving health and development change.



ACCESS TO TOOLS & RESOURCES



PARTNER NETWORKING



BUILD CONNECTIONS



LWALA CASE STUDY

Introduction & Background

Lwala Community Alliance (Lwala) is a civil society organization in western Kenya founded in 2007 by a community that believed that it was unjust not to receive quality healthcare services. Community members came together to build the area's first health clinic in 2007. Since then the clinic has grown into a hospital and Lwala is delivering community-based programming and health services and transforming the health system for 1.1 million people in Migori County.

The Lwala + Blood:Water partnership started in 2007, as Blood:Water supported the launch of the clinic and the first water well near the clinic site. From there Blood:Water was a key supporter as Lwala expanded programs to reach all the local primary schools with safe water, hygiene, and sanitation, and then innovate with an integrated HIV/AIDS and WASH program (HAWI) in 2015.

Lwala graduated from partnership with Blood:Water at the end of 2022, concluding eight years of pairing long-term, iterative and intentional organizational strengthening (“OS”) with flexible financial support. The conclusion of partnership included a “Most Significant Change” assessment whereby Lwala reflected on the impact of Blood:Water’s partnership. This case study highlights the Most Significant Change results documented by Lwala.

LWALA’S IMPACT THROUGH BLOOD:WATER’S GRANT SUPPORT

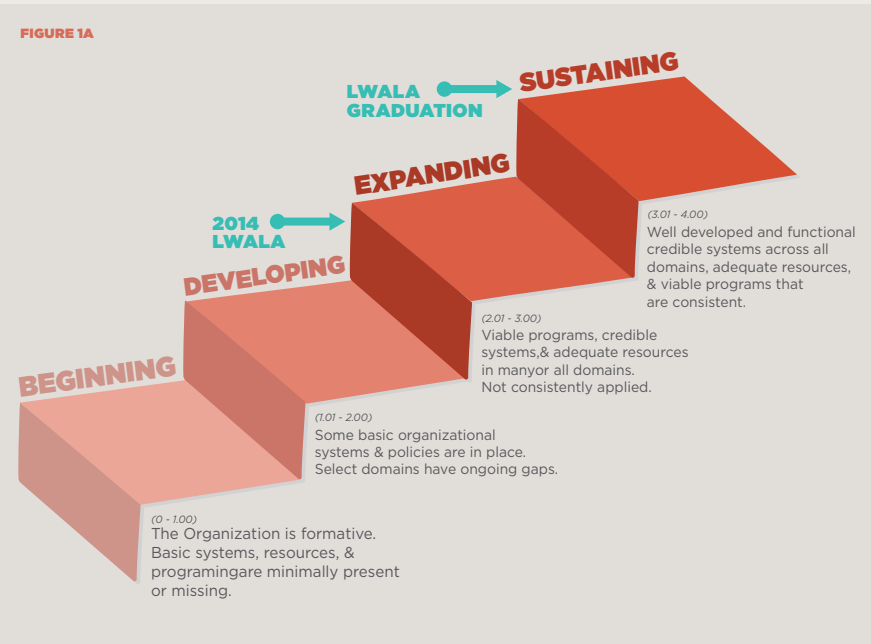
The partnership has facilitated the construction of WASH infrastructure, hygiene and sanitation behavior change through community-led total sanitation (CLTS), household case management via HIV community care, stigma and discrimination mitigation and even supporting facility-based quality improvement. More than 370,000 people were trained in proper sanitation and hygiene practices, and more than 104,000 people were reached with HIV testing and counseling. Nearly all babies are born HIV-free when connected to Lwala services. Through all this, Lwala identified and framed the programmatic needs, relevant responses and applied the funding towards high quality service provision for the communities it reaches daily.

BLOOD:WATER’S IMPACT THROUGH ORGANIZATIONAL STRENGTHENING (OS)

From Lwala’s perspective, the experience of partnership with Blood:Water was beneficial throughout and particularly critical during the initial years. However, when OS funding was paired with the program grant, it enhanced the engagement of both organizations, and Lwala became more objective and target oriented. The OS support started at the right time as Lwala was expanding its community work on WASH and needed to develop systems for the organization to implement credible programs. The OS support also enabled Lwala to undertake key organizational development improvements, including salary surveys and systems expansion and thematic training towards staff development. This added real value to the programmatic grant that the organization was already receiving.

LONG-TERM OUTCOMES THROUGH BLOOD:WATER’S PARTNERSHIP

Lwala’s first IDF assessment in 2014 placed them at the beginning of the “Developing” stage of organizational development (see Figure 1A). The largest jump in scoring came between the second (2016) and third (2019) IDF assessments, and by the end of partnership Lwala scored in the middle of the “Sustaining” stage. The following changes were highlighted in the report:



- + Community programs became associated with the WASH activities and access to water led to improvement in hygiene and proper sanitation throughout the communities served.
- + Tangible changes in attitude among community and households due to continuous health education by the community health workers.
- + Demonstration of growth in developing a digitized data collection and reporting system for community health work.
- + More community consultation during program design and development.

LWALA’S MOST SIGNIFICANT CHANGE

The most significant change identified by Lwala was the strategic development of the Kenya Executive Leadership Team. From 2007-2014, Lwala focused their strategic visioning, brand positioning and executive management in their US staff and board. In 2014 Lwala reached the decision to conduct a robust team role review and a realignment process to make way for a restructure of the executive leadership team. It is noteworthy that this was done following the first IDF in 2014 which identified oversight and leadership as key areas for improvement.

In 2016 Lwala hired a Kenyan managing director to work alongside the US-based executive director. The responsibility to build a strong local accountability body and leadership team was delegated to the managing director and allowed that process to be locally driven. This initiated a robust journey of growing the local senior management team and a Kenyan governance board, which is in place and evolving further today.

“When the idea of Lwala came to be, it was just an idea. But Blood:Water saw an idea that had the opportunity to become something... Blood:Water made the first real investment to make Lwala what it is today.”

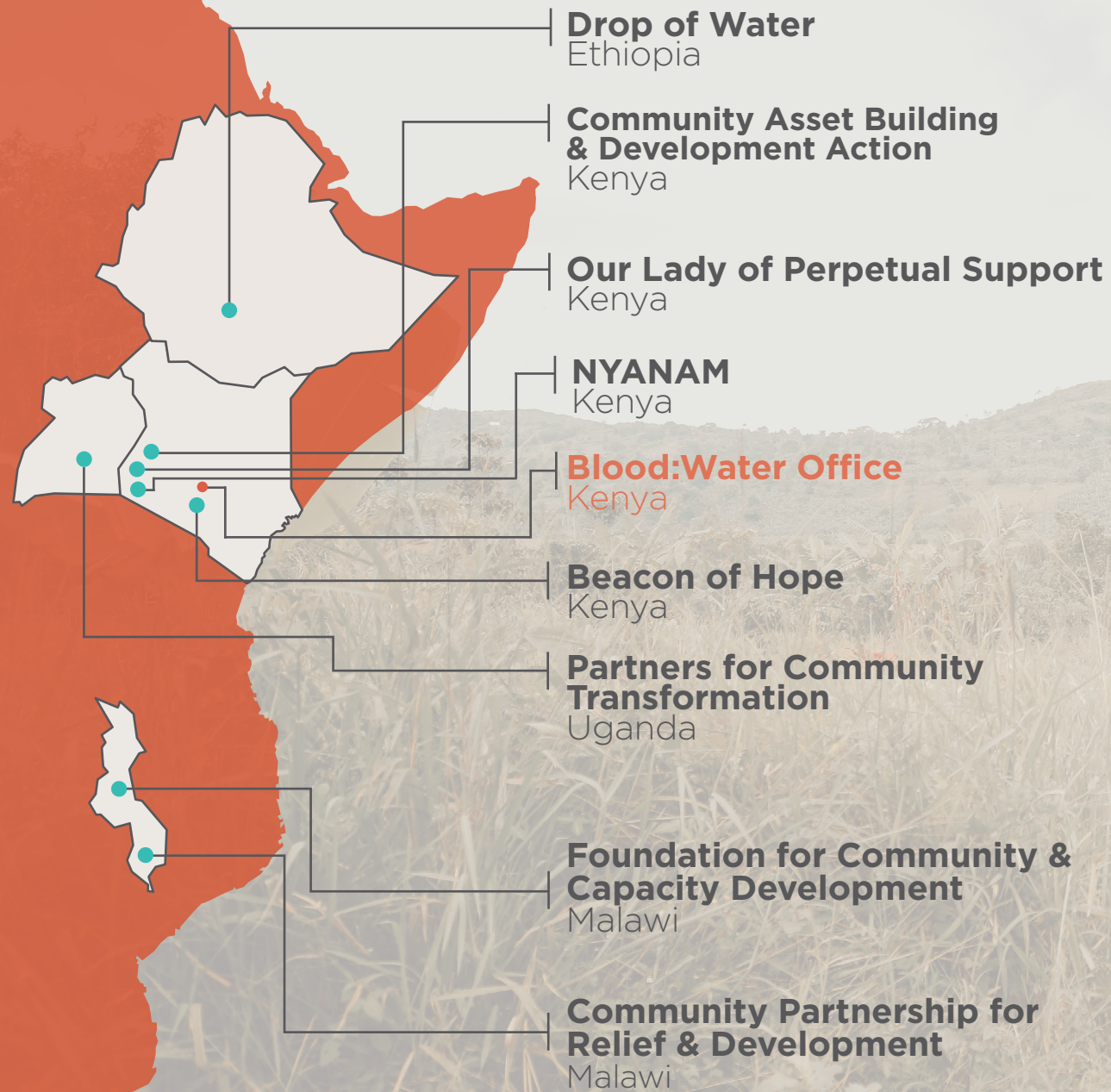


Julius Mbeya
CO-CEO
Lwala, Kenya

WATCH LWALA’S STORY HERE

Internal data ref: <https://bloodwater.lightning.force.com/lightning/Report/000Nu000001D4bVIMAS/view>

CURRENT PARTNERS



AFRICA PARTNERSHIPS TEAM



Nadia Kist
Director of Africa Partnerships
Nairobi, Kenya



Amanda Manzella
Impact & Learning Manager
Buffalo, New York



Ann Kungu
Africa Partnerships Portfolio Manager
Nairobi, Kenya



Agevi Michael
Organizational Strengthening Coordinator
Nairobi, Kenya



Emmaculate Musenya
Africa Partnerships Coordinator
Nairobi, Kenya



Anne Njoroge
Manager, The Leader Collective
Nairobi, Kenya



“Blood:Water’s approach centers around partnership, and they also recognize that there isn’t a one-size fits all solution, that they need to understand and follow African-based, -led organizations to find the solutions that are going to take hold.”

Abby Maxman
President and CEO of Oxfam America

FUNDING PARTNERS

- Shockwave Foundation
- Imago Dei Foundation
- Davison-Bruce Foundation
- Cutwater Foundation

ACCREDITATION



CONTACT US

US Office:
Jake Smith
Executive Director
jsmith@bloodwater.org
615-545-7172

Kenya Office:
Nadia Kist
Director of Africa Partnerships
nkist@bloodwater.org
+254.725.757.406

SOCIAL MEDIA

@bloodwatermission @bloodwater
 @bloodwatermission @bloodwatermission

SOURCES

*<https://www.bridgespan.org>
**<https://www.csis.org>

